



BAUPOWERGROUP
KRAFT AM BAU

SURFACE PREPARATION



SWISS QUALITY

CONCRETE SCARIFIERS

Light and handy scarifier: Environmentally-friendly and in accordance with the required profile. Continuous depth settings from fine to coarse. Wide range of tools for every purpose.

- Strong, solid welded steel construction designed for robust use
- With connection for industrial vacuum
- EMERGENCY-OFF safety switch
- Depth achievement and contact pressure of the rasping and milling wheels can be precisely adjusted with the rotary disk
- Adjustable guiding grip allows work very close to the wall
- Sturdily dimensioned rubber wheels provide a high degree of operating convenience



The fast and strong Scarifier: Environmentally-friendly and in accordance with the required profile

- Depth achieved and contact pressure of the rasping wheels and milling wheels can be precisely set with the rotary disk
- Strong, solid welded steel construction designed for robust use
- Adjustable guiding grip allows work very close to the wall. Robustly designed rubber wheels, high degree of operating comfort
- Extremely wear resistant. For roughening, abrading, leveling as well as grooving of concrete, stone and asphalt surfaces



Powerful, efficient roughening and cleaning machine for large-area tasks. Wide range of tools for versatile use. For hourly rates of up to 120m², depending on the nature of the surface.

- Strong, solid welded steel construction designed for robust use
- Adjustable guiding grip allows work very close to the wall
- Power transfer with toothed belts
- Direction of rotation and polarity reversing switch
- The division of the milling wheels (close or wide) influences the profile of the surface
- Highly wear resistant For roughening, abrading, leveling as well as grooving of concrete surfaces



TECHNICAL DATA	BPS200 (Electric)	BPS250 (Electric)
Motor	1.8 kW, 2.2 kW	4 kW
Working Width	200 mm	250 mm
Dimensions	36m x 90m x 100m mm	48 x 113 x 118 cm
Weight	53 kg	129 kg

TECHNICAL DATA	BPS320 (Electric)
Motor	11 kW, 12.6 kW, 15 kW
Working Width	320 mm
Drive	hydrostatic, self-propelled
Weight	330 kg

FLOOR GRINDERS

The ABPG 270 is an excellent light-weight Machine for concrete cleaning and grinding, quick and easy removal of coatings and adhesives. The ideal equipment to deliver the best possible Surface Preparation before the application of a new coating. The Machine is designed for contractors who need a light-weight machine for small and medium sized jobs.

- Working width 270 mm with 4 diamond tools
- For instant change of diamond tools on job site: "Easy-Click"
- The Tool Holder is designed to fit with magnetic adapters 4 diamond tools
- Removable side plate for edge cleaning work
- The Axel height is easily adjusted for the operators ease of use
- Steel body construction
- Excellent dust control with the effective shroud with vacuum port will keep the working environment clean and away from abrasive dust particles



BPG 450 „TRIO-TEC“ Floor Grinder-Polisher with 3 Counter Rotating Tool Heads. Compact robust steel design. Ideally suited to prepare and polish surfaces.

- The 3-Counter-Rotating heads add stability and produce a superior finish.
- Easy coupling to industrial Dust Collection System
- Dust Control Protects against silica and other dusts
- The handle can be adjusted to a height that suits the operator
- Removable side plate to work up to the edge of the wall
- For dry and wet applications
- "Easy Click" quick Tool Change System
- Soft on Floors tough on coatings
- Steel Body construction



The BPG 520 is extremely aggressive, but floor friendly in removal of all types of thick coatings, underlayments and high spots in floors.

- Clamping lever
- Dust shroud with rubber seal
- Rubber wheels 50 x 160 mm
- Connection for Industrial extractor
- Emergency stop switch
- Special screw for transport
- Security switch



TECHNICAL DATA	BPG270
Motor	2.2 kW (Electric)
Tool Plate Rotation	1500 rpm (constant Rotation) 300 – 2000 rpm (Model SPC)
Working Width	270 mm
Weight	57 kg

TECHNICAL DATA	BPG450
Motor	2.2 kW (Electric)
Voltage	230 V and 400 V
Motor speed	1460 rpm (constant Rotation)
Working Width	450 mm
Weight	116 kg

TECHNICAL DATA	BPG520
Motor	3 kW (Electric)
Voltage	400 V / 50/60 Hz, 6.4 A
Motor speed	1450 rpm
Working Width	520 mm
Weight	135 kg

FLOOR GRINDERS PRO

Floor Grinding and Polishing machine with 3 counter rotating High-Precision Planetary Heads. Compact robust steel design. Ideal for medium to large Surfaces. The 8-cornered Octavia-Form Dust Hood with side Opening for Edge Grinding along vertical surfaces and walls. Easy stand-up work avoids Backache.

- Speed Regulation for grinding and polishing
- Easy adjustment of grinding pressure with shifting of weight
- Emergency Switch-Off
- Flexible tool plate Holder
- Height adjustable handle
- Integrated water tank with control lever for wet and dry applications
- Vibrations reducing solid rubber Wheels
- Compact and robust steel Body design
- 3 tool plates with a total of 9 segments
- Fast Tool Change on job site with "Easy-Click"



Floor Grinding and Polishing machine with 3 counter rotating High-Precision Planetary Heads. Compact robust steel design. Ideal for medium to large Surfaces. With the 8-cornered Octavia-Form Dust Hood with side Opening for Edge Grinding along vertical surfaces and walls. Easy stand-up work avoids Backache.

- Rotation Regulation for grinding and polishing
- Easy adjustment of grinding pressure with shifting of weight plates
- Flexible tool plate Holder
- Height adjustable handle
- Integrated water tank with control lever for wet and dry applications
- Compact and robust steel Body design
- Fast Tool Change on job site with "Easy-Click"



Floor Grinding and Polishing machine BPG 825-PRO with High Precision Planetary Gear and Powerful Drive. Ideal for large Surfaces..

- Important: Gear unit hermetically sealed and dustproof
- High and ergonomic Comfort
- Rotation Regulation for grinding and polishing
- Flexible tool plate Holder
- Integrated water tank with control lever for wet and dry applications
- Vibrations reducing solid rubber Wheels
- Compact and robust steel Body design
- Fast Tool Change on job site with "Easy-Click"



FLOOR GRINDERS PRO
ACCESSORIES
TOOLS

TECHNICAL DATA	BPG 525 PRO	BPG650 PRO	BPG825 PRO
Motor	7.5 kW (Electric)	11 kW (Electric)	15 kW (Electric)
Voltage	3x400 V / 50 Hz, 16 A	400 V / 50 Hz, 32 A	3x400 V / 50 Hz, 32 A
Tool Plate Rotation	100-700 rpm	100-700 rpm	120-840 rpm
Working Width	525 mm	650 mm	825 mm
Weight	335 kg	410 kg	555 kg

ACCESSORIES FOR SCARIFIERS

HMT CUTTER



Tungsten Points	Outer Ø	Inner Ø	Thickness
5	40 mm	16 mm	6 mm
8	55 mm	15 mm	6 mm

FLAT STAR CUTTER



Steel heat treated



Outer Ø	Inner Ø	Thickness
50 mm	15 mm	4 mm

BEAM CUTTER



Tungsten Blades



Outer Ø	Inner Ø	Thickness
40 mm	15 mm	22 mm

DIAMOND GRINDING DISCS

BPGC 100



CONCRETE

Diamond grinding discs
for concrete



Ø in mm	Type	Bore hole	Article No.
100	double row	22,2 mm	12001041845
125	double row	22,2 mm	12001041846
150	double row	22,2 mm	12001041847
180	double row	22,2 mm	12001041848

BPGC 250



CONCRETE

Diamond grinding discs for
concrete and floor pavement



Ø in mm	Segments (L x W x H)	No.	Bore hole	Article No.
250	40 x 10 x 10	20	19 mm	1041844

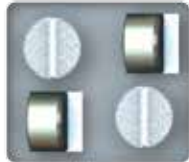
OVERVIEW

REMOVAL TOOLS

Efficient diamond tools to remove epoxy and PU coatings, residual adhesives or to grind thick layers of soft material such as asphalt or rain damaged concrete.



P-1xH



P-2xH



P-2xQ



H-PCD

FLOOR PREPARATION TOOLS



	Soft concrete	Soft concrete	Medium concrete	Hard concrete
Grit 16		H-16	M-016	S-016
Aggressive grinding				
Grit 30		H-030	M-030	S-030
Rough grinding				
Grit 60		-	M-060	S-060
Fine grinding				
Grit 120		-	M-120	S-120
Polishing				

POLISHING TOOLS AND FLUIDS

Hardening	FDENS: Densifier to harden floors and to prepare them for polishing.
Transition	FHYBR: Hybrid polishing tool.
Polishing	Selection of finishing: FRESN 200: Light honed finish FRESN 400: Matte finish FRESN 800: Low sheen FRESN 1500: High-sheen finish FRESN 3000: High-gloss finish
Protecting	FGUARD: Guard to protect floors against stains and enhance colour and gloss.
Make it shine	FPAD: Use diamond impregnated pads on a burnisher or grinder to reach a perfect finish.

1XHL 1XHR

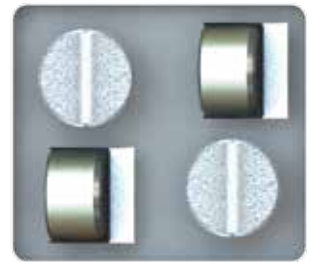
Aggressive removal up to 6 mm coating residues (adhesives, epoxy, PU) with high power machine



Pieces	Type	Article No.
6	Counter-clockwise	
9	Counter-clockwise	
6	Clockwise	
9	Clockwise	

2XHL 2XHR

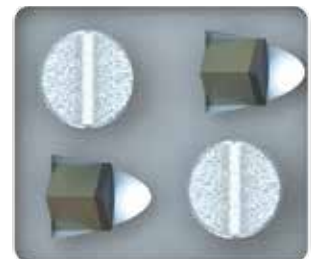
Aggressive removal up to 6 mm coating residues (adhesives, epoxy, PU) with high to medium power machine.



Pieces	Type	Article No.
6	Counter-clockwise	
9	Counter-clockwise	
6	Clockwise	
9	Clockwise	

2XQL 2XQR

Removal up to 3 mm coating residues (adhesives, epoxy, PU, asbestos, paint) with medium to low power machine.



Pieces	Type	Article No.
6	Counter-clockwise	
9	Counter-clockwise	
6	Clockwise	
9	Clockwise	

PCD

Residual coating removal, rain damaged concrete, paint, asphalt grinding.



Pieces	Article No.
9	
12	

*Direction of rotation is determined by the operator's point-of-view standing behind the grinder.

S-016

Very hard to hard concrete.
Grit 16 for aggressive grinding.



Pieces

Article No.

9

12

M-016

Hard to medium concrete.
Grit 16 for aggressive grinding.



Pieces

Article No.

9

12

H-016

Medium to soft concrete.
Long lasting.
Grit 16 for aggressive grinding.



Pieces

Article No.

9

12

S-030

Very hard to hard concrete.
Grit 16 for aggressive grinding.



Pieces

Article No.

9

12

M-030

Hard to medium concrete.
Grit 16 for aggressive grinding.



Pieces

Article No.

9

12

H-030

Medium to soft concrete.
Long lasting.
Grit 16 for aggressive grinding.



Pieces

Article No.

9

12

S-060

Very hard to hard concrete.
Grit 60 for fine grinding.



Pieces

Article No.

9

12

M-060

Hard to medium concrete.
Grit 60 for fine grinding.



Pieces

Article No.

9

12

S-120

Very hard to hard concrete.
Grit 120 to prepare before
polishing.



Pieces

Article No.

9

12

M-120

Hard to medium concrete.
Grit 120 to prepare before
polishing.



Pieces

Article No.

9

12

FDENS

Lithium based densifier.
Increase substrate hardness
before polishing.



Quantity
20 l

Article No.

FHYBR

Transition tool to switch from
metal bond to resin bond
polishing tools. Velcro connection. Dry use.
Grit 100.



Pieces

3
9

Article No.

FRESN

Resin bond polishing tool.
Velcro connection. Dry use.



Type

FRESN 200 - Light honed finish

Pieces

3
9

Article No.

FRESN 400 - Matte finish

3
9

FRESN 800 - Low sheen

3
9

FRESN 1500 - High-sheen finish

3
9

FRESN 3000 - High-gloss finish

3
9

FSPAC

Flexible spacer to absorb small floor's irregularities. Velcro connection.



Ø in mm

Article No.

230

280

FGUAR

Protects the floor against stains and enhance floor colours and shine.



Quantity

Article No.

20 l

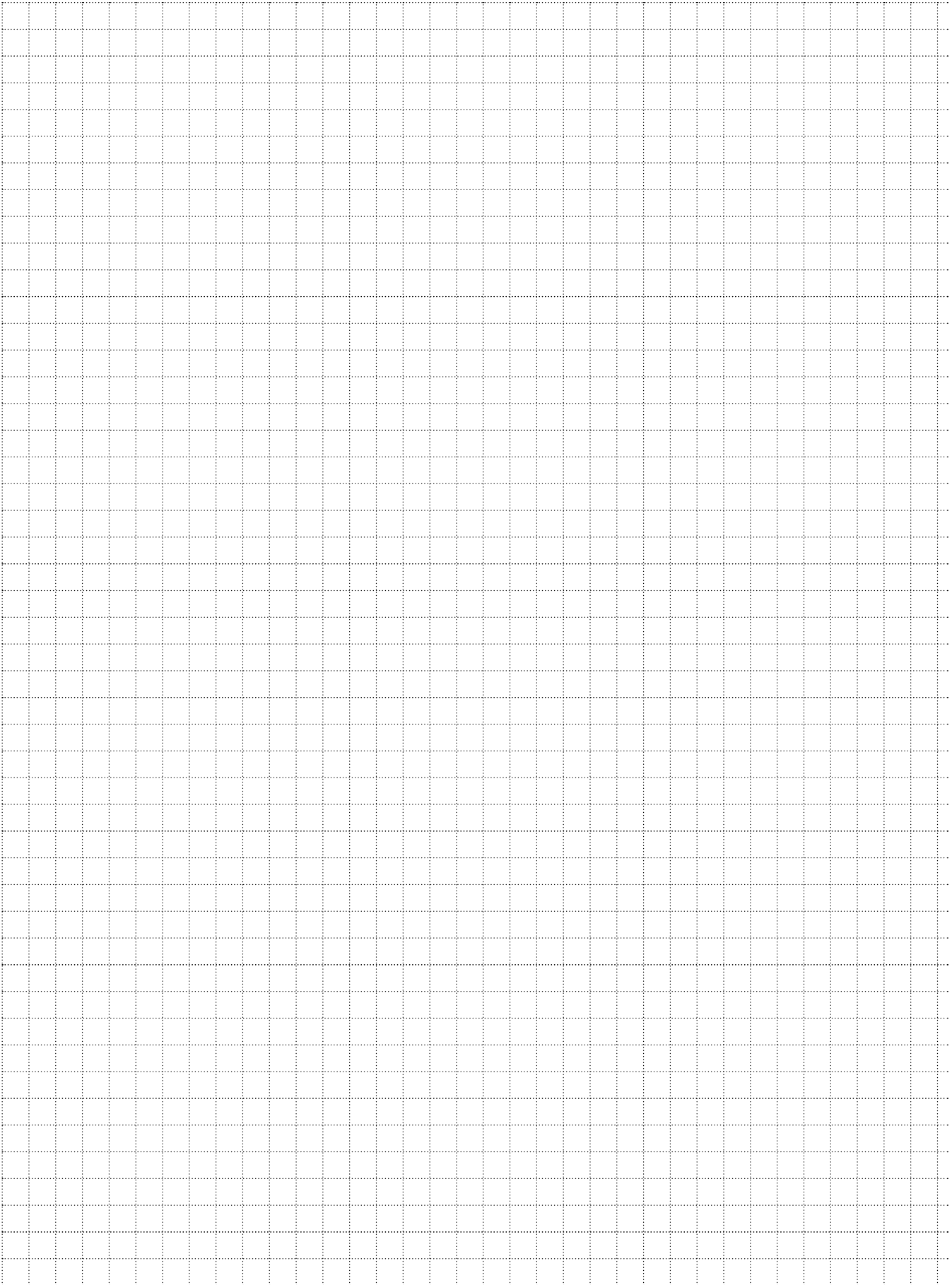
FPAD

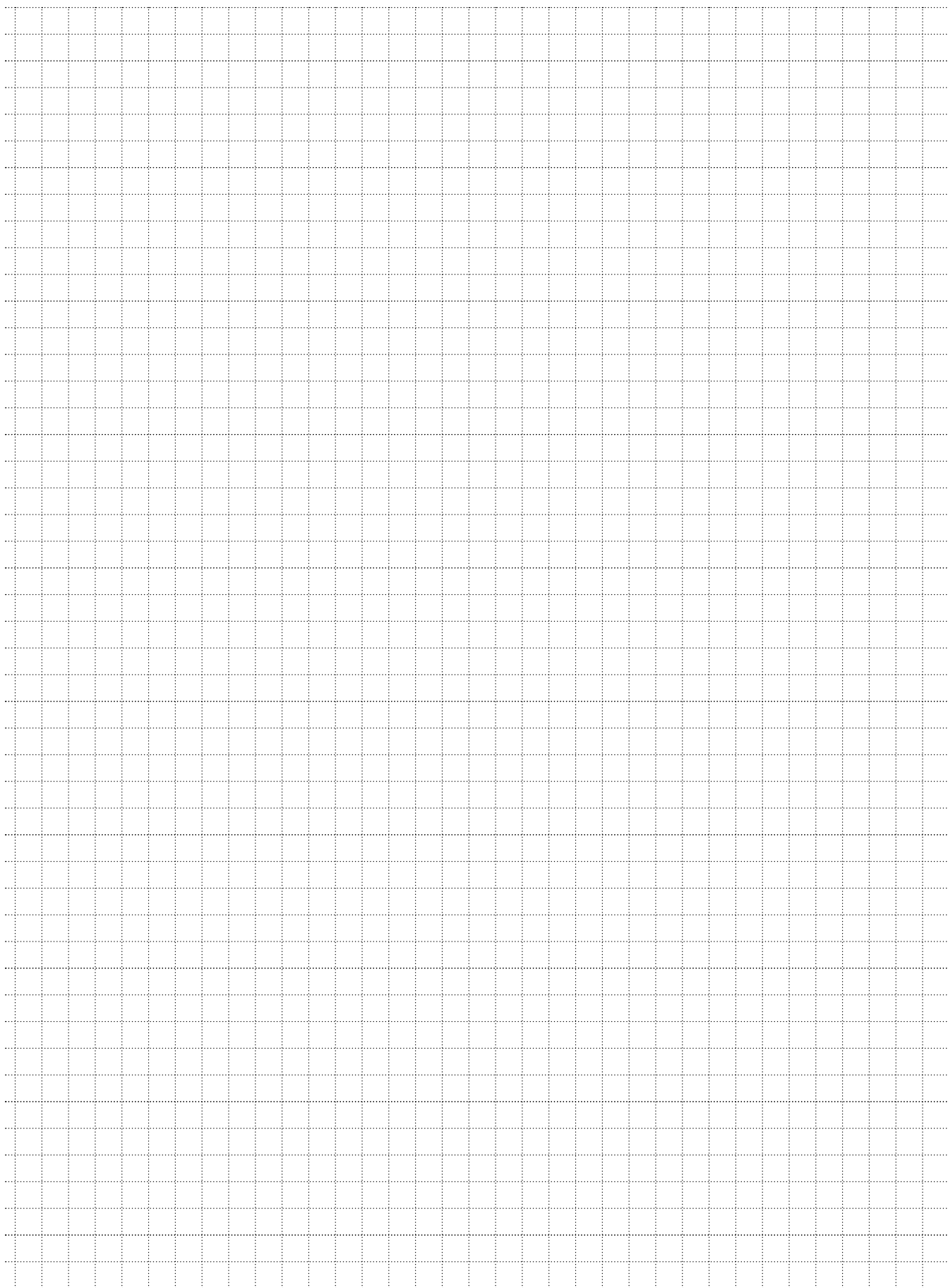
Grit 1500:
Diamond impregnated pad for maximum shine

Grit 3000:
Diamond impregnated pad for high gloss aesthetic.



Grit	Ø in mm	Pieces	Article No.
1500	229 mm	12	
1500	280 mm	12	
1500	432 mm	12	
1500	533 mm	5	
1500	686 mm	5	
3000	229 mm	12	
3000	280 mm	12	
3000	432 mm	12	
3000	533 mm	5	
3000	686 mm	5	





BauPower Middle East FZ-LLC
Jafza 1 Building
Jebel Ali Free Zone
United Arab Emirates

Phone +971 50 7527890
Email office.dubai@baupowergroup.com
www.baupowergroup.ae

BauPower Middle East FZ-LLC
Business Center RAKEZ
Ras Al Khaimah
United Arab Emirates

Bau Power Group AG
Staatsstrasse 199
9463 Oberriet
Switzerland