



BAUPOWERGROUP

KRAFT AM BAU

PRECAST / RENTAL



SWISS QUALITY

MECHANICAL POKER VIBRATOR WITH DRIVE UNIT

- Powerful Heavy Duty Mechanical Driven Poker Vibrator
- Heavy Duty Double Spiral Hose
- Induction hardened magnesium steel alloy
- Reinforced steel hose reinforced by 6 layers of special spun steel
- High vibrating power
- Long working life, wear resistance and reliability
- Easy operation and compatibility
- No special maintenance
- Dynapac coupling or Hagashi coupling
- 45mm, 55mm & 65mm is also available with length of 12 metre shaft



Drive Unit



Dynapac Coupling Type

TECHNICAL DATA	AVP 25	AVP 35	AVP 45	AVP 55	AVP 65
Tube Diameter (mm)	25	35	45	55	65
Tube Weight (kg)	0.6	1.3	2.3	2.7	6.3
Total Weight (kg)	10	12.2	16.5	17.5	21.5
Tube Length (mm)	301	307	340	381	426
Flexible Shaft Length (m)	6	6	6	6	6
Total Length (m)	6.3	6.4	6.4	6.4	6.5
Amplitude (mm)	0.8	1.2	1.2	1.2	1
Frequency (rpm)	12,000	12,000	12,000	12,000	12,000

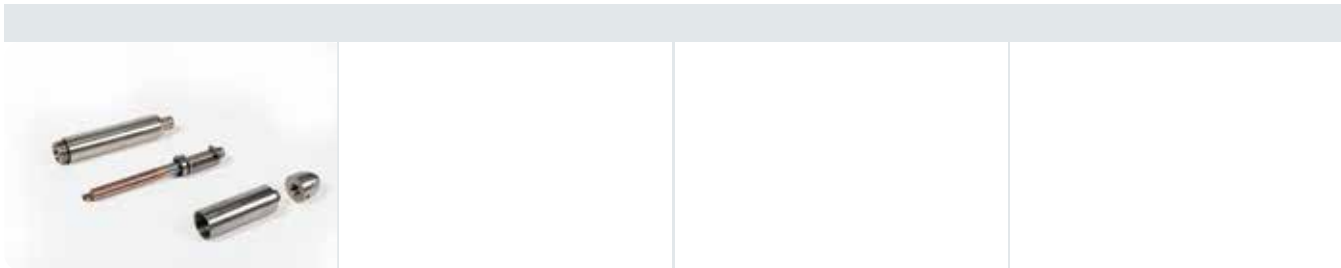
Frequency is considering speed of drive unit to be 2800rpm

TECHNICAL DATA – DRIVE UNITS	Honda GX 160	Robin EY -20	Lombardini 15LD
Fuel	Gasoline	Gasoline	225
Output Power Max.	3.6kW , 4.8hp	3.7 kW, 5 hp	Diesel
Frequency (rpm)	2800	3600	3600
Dimensions (L/W/H)	445x420x520	303x326x392	310x215x430
Weight (kg)	21	20	31

HIGH FREQUENCY POKER VIBRATOR

The solution for the hardest challenges in the field of concrete compaction:

- Maximum power makes fast reliable compaction possible
- Full motor protection by means of thermo-control.
- Warranty 2 years!
- Reliable bearings
- Quick replacement of spares without special tools
- Protection of form possible with optional vulkollan tip
- Replacement of cap possible without opening the bottle.
- Ideal lubrication and cooling with oil
- Service-friendly by modular construction.
- Shock-proof handswitch
- We do our best to satisfy the individual needs of our customers not only with regard to voltage, length of cables and hoses



TECHNICAL DATA	PEA 30 H	PEA 37 HN	PEA 47 H	PEA 57 H	PEA 65 H
Diameter (mm)	31	38.5	51	59	65
Length (mm)	320	370	390	360	340
Vibrations (1/min)	12000	12000	12000	12000	12000
Amplitude (mm)	1.8	1.8	2.4	2.4	2.5
Voltage (V/Hz)	48/200	48/200	48/200	48/200	48/200
Output (kVA)	0.7	0.85	1.4	2	2
Nominal current (A)	10	12	20	28	28
Weight bottle/total (kg)	1.7 / 8.1	2.8 / 9.8	4.8 / 14.6	6 / 15.4	7.2 / 16.8
plug type	CEE	CEE	CEE	CEE	CEE

TECHNICAL DATA	PEA 65 HL	PEA 80 H
Diameter (mm)	66	81
Length (mm)	510	445
Vibrations (1/min)	12000	12000
Amplitude (mm)	2.5	3.2
Voltage (V/Hz)	48/200	48/200
Output (kVA)	2.8	4
Nominal current (A)	38	55
Weight bottle/total (kg)	9.2 / 18.7	15 / 29
plug type	CEE 63 A	CEE 63 A

HIGH FREQUENCY CONVERTER

- Enormous power reserve by high peak currents
- Light weight, compact and functional for sites
- Self insured by thermal, phase failure and overload protection



PEA 4.0



Mini 24



Mini 60

ELECTRONIC CONVERTERS

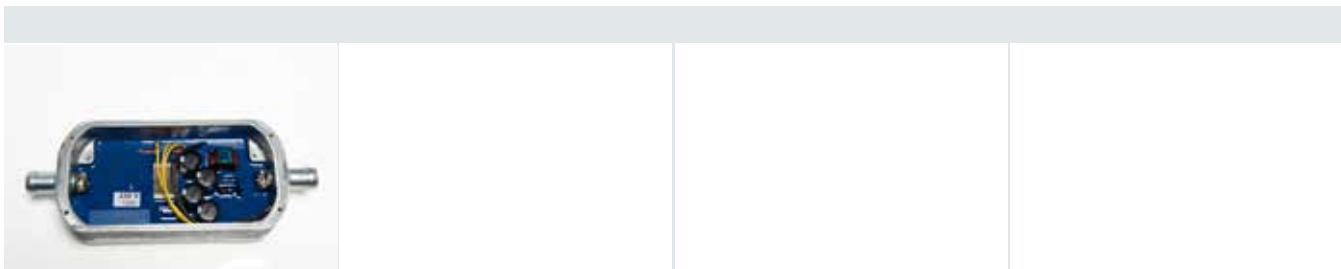
TECHNICAL DATA	MINI 10	MINI 24	MINI 60
power (KVA)	2	3	5.5
voltage output (V / Hz)	42/200	40/200	42/200
max. current output (A)	30	40	70
voltage input (V / Hz)	230/50-60	230/50-60	230/50-60
sockets CEE	1	2	4

ELECTRO-MECHANIC CONVERTERS

TECHNICAL DATA	PEA 3.0	PEA 4.0	PEA 5.5	PEA 7.5
power (KVA)	3	4	5.5	7.5
voltage output (V / Hz)	42/200	42/200	42/200	42/200
max. current output (A)	40	55	76	104
voltage input (V / Hz)	400/50	400/50	400/50	400/50
sockets CEE	2	3	3	4

MINI INTEGRATED FREQUENCY POKER

- The Mini 4 line can be connected directly to 230 V AC
- Light weight, compact and functionable for sites
- Self insured by thermal, phase failure and overload protection
- Poker vibrator up from 0.8 m of protective hose possible
- Inverter suitable as spare part
- Mountable to all 250 V AC vibrator bottles
- Highest output in the market



Integrated frequency

TECHNICAL DATA	MINI 4 PEA 30	MINI 4 PEA 37	MINI 4 PEA 47	MINI 4 PEA 57
Dimensions inverter (mm)	210x123x75	210x123x75	210x123x75	210x123x75
Diameter vibrator bottle (mm)	31	39	50	59
Length vibrator bottle (mm)	320	370	390	360
Frequency (1/min)	12000	12000	12000	12000
Amplitude (mm)	1.8	1.8	2.4	2.4
Centrifugal force (N)	1400	1500	3600	5400
Voltage (V)	230 / 1 Phase	230 / 1 Phase	230 / 1 Phase	230 / 1 Phase
Max. current (A)	3.5	3.7	6.1	7
Output (kVA)	0.8	0.85	1.4	1.7
Total weight (kg)	11.7	13	17	17.7

POWER TROWEL

- Superior Power Trowel with Powder Coat Finish & Auto Cut-Off
- Anti- Vibration Handle to Reduce vibration transmitted to operator
- Comfort pad to cushion operator
- Lift-Up Side Guards Help Trowelling right to walls
- Chrome plated blades for Easy Maintenance & Cleaning
- Dead Man Switch for Superior Safety
- Central Lifting Hook for Easy Transportation



PowerTrowel with handle



Dead Man Switch Cut Off

TECHNICAL DATA	PT 600	PT 900	PT 1200
No. of Blades	4	4	4
Clutch	Centrifugal	Centrifugal	Centrifugal
Trowelling Area (m2)	0,28	0,64	0,97
Trowel Speed (rpm)	60-120	60-120	60-135
Drive Motor	Honda Petrol GX 160 - 1 cyl	Honda Petrol GX 160 - 1 cyl	Honda Petrol GX 270 - 1 cyl
Output Power	3.6kW, 4,8hp	3.6kW, 4,8hp	6.3KW,8.5hp
Dimensions (LxWxH) (mm)	1300x600x990	2070x992x1050	2140x1205x1050
Operating Weight (kg)	75	95	120



KSP 201



AAC BLOCKS

Diamond blades for AAC blocks and sand lime stones



Ø in mm	Segments (LxWxH)	No.	Bore hole	Article No.
800	24 x 7 x 12	92	60 mm	1001040288
900	24 x 7 x 12	102	60 mm	1001040289
1000	24 x 7 x 12	110	60 mm	1001040290

PCP 323



PRECAST

Diamond blades for Precast application



Ø in mm	Segments (LxWxH)	No.	Bore hole	Article No.
900	24 x 7.5 x 23	102	60 mm	100408009
1100	24 x 7.5 x 23	120	60 mm	100408011
1300	24 x 7.5 x 23	144	60 mm	100408012

BPDA 100



ASPHALT

Diamond blades for asphalt, with inclined protection segments



Ø in mm	Segments (LxWxH)	No.	Bore hole	Article No.
300	40 x 3,2 x 10	18	20,0 mm	1000791140
300	40 x 3,2 x 10	18	25,4 mm	1000791118
350	40 x 3,2 x 10	21	20,0 mm	1000791141
350	40 x 3,2 x 10	21	25,4 mm	1000791119
400	40 x 3,6 x 10	24	25,4 mm	1000791120
450	40 x 3,6 x 10	28	25,4 mm	1000791121
500	40 x 3,6 x 10	30	25,4 mm	1000791122
600	40 x 4,0 x 10	36	25,4 mm	1000791123



BP POROTON



POROTON

Diamond blades for Poroton and abrasive materials



Ø in mm	Segments (LxWxH)	No.	Bore hole	Article No.
625	40 x 4,4 x 10	36	60 - 55,0 mm	1000790429
650	40 x 4,4 x 10	38	60 - 55,0 mm	1000790431
700	40 x 4,4 x 10	40	60 - 55,0 mm	1000790188
900	40 x 4,8 x 10	52	60 - 55,0 mm	1000790152
1000	40 x 4,8 x 10	70	60 - 55,0 mm	1000790168



BPDC 100



CONCRETE

Diamond blades for asphalt, with inclined protection segments



Ø in mm	Segments (LxWxH)	Bore hole	Article No.
115	35,0 x 2,6 x 10,0	22,2 mm	10001037637
230	33,7 x 3,1 x 10,0	22,2 mm	10001037638

BPDC 200



CONCRETE

Diamond blades for concrete and construction materials



Ø in mm	Segments (LxWxH)	No.	Bore hole	Article No.
115	31,5 x 2,4 x 10	9	22,2 mm	1000791100
125	31,5 x 2,4 x 10	10	22,2 mm	1000791101
230	31,5 x 2,6 x 10	16	22,2 mm	1000791102
300	40 x 3,2 x 10	21	20,0 mm	1000791136
300	40 x 3,2 x 10	21	25,4 mm	1000791103
350	40 x 3,2 x 10	24	20,0 mm	1000791137
350	40 x 3,2 x 10	24	25,4 mm	1000791104
400	40 x 3,4 x 10	28	20,0 mm	1000791142
400	40 x 3,4 x 10	28	25,4 mm	1000791105
450	40 x 3,4 x 10	32	25,4 mm	1000791106

BPDC 300



CONCRETE

Diamond blades for concrete, reinforced concrete and construction materials



Ø in mm	Segments (LxWxH)	No.	Bore hole	Article No.
300	40 x 2,8 x 10	21	20,0 mm	1000791200
300	40 x 2,8 x 10	21	30,0 mm	1000791146
350	40 x 3,2 x 10	24	20,0 mm	1000791201
350	40 x 3,2 x 10	24	25,4 mm	1000791147
400	40 x 3,5 x 10	28	20,0 mm	1000791202
400	40 x 3,5 x 10	28	25,4 mm	1000791148
450	40 x 3,6 x 10	32	25,4 mm	1000791149
500	40 x 4,0 x 10	36	25,4 mm	1000791150
600	40 x 4,6 x 10	42	30,0 mm	1000791151

BPDG 100



GRANITE

Diamond blades for granite,
natural and artificial stones



Ø in mm	Segments (LxWxH)	No.	Bore hole	Article No.
230	42 x 2,6 x 10	16	22,2 mm	1000791109
300	38 x 3,0 x 10	21	20,0 mm	1000791138
300	38 x 3,0 x 10	21	30-25,4 mm	1000791110
350	40 x 3,2 x 10	24	20,0 mm	1000791139
350	40 x 3,2 x 10	24	30-25,4 mm	1000791111
400	38 x 3,5 x 10	28	30-25,4 mm	1000791112
450	38 x 4,0 x 10	32	30-25,4 mm	1000791113



BPCB 100



CONCRETE

Diamond core bits
for concrete



Ø in mm	Segments (LxWxH)	No.	Connection	Working length	Article No.
42	24 x 3,5 x 10	4	1 1/4"	400 mm	1100790717
52	24 x 3,5 x 10	5	1 1/4"	400 mm	1100790977
56	24 x 3,5 x 10	5	1 1/4"	400 mm	1100790718
62	24 x 3,5 x 10	6	1 1/4"	400 mm	1100790978
72	24 x 3,5 x 10	6	1 1/4"	400 mm	1100790980
82	24 x 3,5 x 10	7	1 1/4"	400 mm	1100790981
92	24 x 3,5 x 10	8	1 1/4"	400 mm	1100790982
102	24 x 4,0 x 10	9	1 1/4"	400 mm	1100790983
112	24 x 4,0 x 10	10	1 1/4"	400 mm	1100790984
122	24 x 4,0 x 10	10	1 1/4"	400 mm	1100790985
127	24 x 4,0 x 10	10	1 1/4"	400 mm	1100790986
132	24 x 4,0 x 10	11	1 1/4"	400 mm	1100790987
142	24 x 4,0 x 10	11	1 1/4"	400 mm	1100790988
152	24 x 4,0 x 10	12	1 1/4"	400 mm	1100790989
162	24 x 4,0 x 10	13	1 1/4"	400 mm	1100790990
172	24 x 4,0 x 10	13	1 1/4"	400 mm	1100790720
182	24 x 4,0 x 10	15	1 1/4"	400 mm	1100790991
200	24 x 4,8 x 10	16	1 1/4"	400 mm	1100790992
225	24 x 4,8 x 10	17	1 1/4"	400 mm	1100790721
227	24 x 4,8 x 10	17	1 1/4"	400 mm	1100790993



Further diameters on demand

BPGC 100



CONCRETE

Diamond grinding discs
for concrete



Ø in mm	Type	Bore hole	Article No.
100	double row	22,2 mm	12001041845
125	double row	22,2 mm	12001041846
150	double row	22,2 mm	12001041847
180	double row	22,2 mm	12001041848

BPGC 250



CONCRETE

Diamond grinding discs for
concrete and floor pavement



Ø in mm	Segments (L x W x H)	No.	Bore hole	Article No.
250	40 x 10 x 10	20	19 mm	1041844

OVERVIEW

REMOVAL TOOLS

Efficient diamond tools to remove epoxy and PU coatings, residual adhesives or to grind thick layers of soft material such as asphalt or rain damaged concrete.



P-1xH



P-2xH



P-2xQ



H-PCD

FLOOR PREPARATION TOOLS



	Soft concrete	Soft concrete	Medium concrete	Hard concrete
Grit 16		H-16	M-016	S-016
Aggressive grinding				
Grit 30		H-030	M-030	S-030
Rough grinding				
Grit 60		-	M-060	S-060
Fine grinding				
Grit 120		-	M-120	S-120
Polishing				

POLISHING TOOLS AND FLUIDS

Hardening	FDENS: Densifier to harden floors and to prepare them for polishing.
Transition	FHYBR: Hybrid polishing tool.
Polishing	Selection of finishing: FRESN 200: Light honed finish FRESN 400: Matte finish FRESN 800: Low sheen FRESN 1500: High-sheen finish FRESN 3000: High-gloss finish
Protecting	FGUARD: Guard to protect floors against stains and enhance colour and gloss.
Make it shine	FPAD: Use diamond impregnated pads on a burnisher or grinder to reach a perfect finish.

1XHL 1XHR

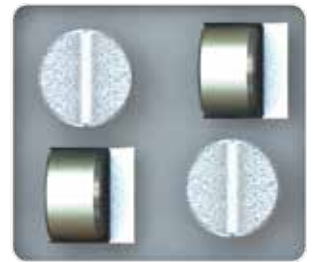
Aggressive removal up to 6 mm coating residues (adhesives, epoxy, PU) with high power machine



Pieces	Type	Article No.
6	Counter-clockwise	
9	Counter-clockwise	
6	Clockwise	
9	Clockwise	

2XHL 2XHR

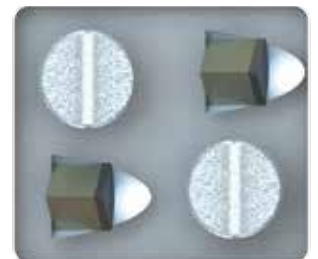
Aggressive removal up to 6 mm coating residues (adhesives, epoxy, PU) with high to medium power machine.



Pieces	Type	Article No.
6	Counter-clockwise	
9	Counter-clockwise	
6	Clockwise	
9	Clockwise	

2XQL 2XQR

Removal up to 3 mm coating residues (adhesives, epoxy, PU, asbestos, paint) with medium to low power machine.



Pieces	Type	Article No.
6	Counter-clockwise	
9	Counter-clockwise	
6	Clockwise	
9	Clockwise	

PCD

Residual coating removal, rain damaged concrete, paint, asphalt grinding.



Pieces	Article No.
9	
12	

*Direction of rotation is determined by the operator's point-of-view standing behind the grinder.

S-016

Very hard to hard concrete.
Grit 16 for aggressive grinding.



Pieces

Article No.

9

12

M-016

Hard to medium concrete.
Grit 16 for aggressive grinding.



Pieces

Article No.

9

12

H-016

Medium to soft concrete.
Long lasting.
Grit 16 for aggressive grinding.



Pieces

Article No.

9

12

S-030

Very hard to hard concrete.
Grit 16 for aggressive grinding.



Pieces

Article No.

9

12

M-030

Hard to medium concrete.
Grit 16 for aggressive grinding.



Pieces

Article No.

9

12

H-030

Medium to soft concrete.
Long lasting.
Grit 16 for aggressive grinding.



Pieces

Article No.

9

12

S-060

Very hard to hard concrete.
Grit 60 for fine grinding.



Pieces

Article No.

9

12

M-060

Hard to medium concrete.
Grit 60 for fine grinding.



Pieces

Article No.

9

12

S-120

Very hard to hard concrete.
Grit 120 to prepare before
polishing.



Pieces	Article No.
9	
12	

M-120

Hard to medium concrete.
Grit 120 to prepare before
polishing.



Pieces	Article No.
9	
12	

FDENS

Lithium based densifier.
Increase substrate hardness
before polishing.



Quantity
20 l

Article No.

FHYBR

Transition tool to switch from
metal bond to resin bond
polishing tools. Velcro connection. Dry use.
Grit 100.



Pieces

3
9

Article No.

FRESN

Resin bond polishing tool.
Velcro connection. Dry use.



Type

FRESN 200 - Light honed finish

Pieces

3
9

Article No.

FRESN 400 - Matte finish

3
9

FRESN 800 - Low sheen

3
9

FRESN 1500 - High-sheen finish

3
9

FRESN 3000 - High-gloss finish

3
9

FSPAC

Flexible spacer to absorb small floor's irregularities. Velcro connection.



Ø in mm

Article No.

230

280

FGUAR

Protects the floor against stains and enhance floor colours and shine.



Quantity

Article No.

20 l

FPAD

Grit 1500:
Diamond impregnated pad for maximum shine

Grit 3000:
Diamond impregnated pad for high gloss aesthetic.



Grit	Ø in mm	Pieces	Article No.
1500	229 mm	12	
1500	280 mm	12	
1500	432 mm	12	
1500	533 mm	5	
1500	686 mm	5	
3000	229 mm	12	
3000	280 mm	12	
3000	432 mm	12	
3000	533 mm	5	
3000	686 mm	5	

ITAL TOWER

ITAL TOWER FENIX

- Lighting tower with manual lifting system and auto brake winch
- Low noise diesel generator
- Bounded tank capacity 110%
- Site tow-trailer with single axle suspensions
- Lockable doors
- Large doors for maintenance
- Zinc plating and epoxy powder painted structure for outdoor application



TECHNICAL DATA	ITAL TOWER FENIX
Frequency	50 Hz
Speed	3000 rpm
Voltage	230 V
Maximum electrical power	4,2 kW
Maximum Height	7,5 m
Lifting System	manual
Extentions	5
Rotation	355°
Tank	43 l
Floodlights	4 X 300 W LED
Manual Stabilizers	4+1 (Ruota)
Max Runtime with Lights Only	86 hours
Fuel Consumption w/ Lights Only	0,5 l/h
Max Wind Rating	90 km/h
Tyres	155/80R13
Weight	600 kg
Engine	
Model	Model Kohler 15LD350
Fuel	diesel
Cylinders	1
Cooling System	Air
Alternator	
Model	Linz Electric
Type	SP
Electrical Power	4,2 KW
Cos-fi	1

BauPower Middle East FZ-LLC
Jafza 1 Building
Jebel Ali Free Zone
United Arab Emirates

Phone +971 50 7527890
Email office.dubai@baupowergroup.com
www.baupowergroup.ae

BauPower Middle East FZ-LLC
Business Center RAKEZ
Ras Al Khaimah
United Arab Emirates

Bau Power Group AG
Staatsstrasse 199
9463 Oberriet
Switzerland